



Destination Design

Three travel-loving design gurus share their favorite getaways for design inspiration

WRITTEN BY JENNY BRADLEY PFEFFER
ILLUSTRATIONS BY NIGEL BUCHANAN

It has been said that life begins at the end of our comfort zone. The same might be noted for creativity. Exotic locations (and even those that are just down the road) not only offer a change of scenery and satisfy one's wanderlust, they enlighten. Unburdened by our harried daily schedules, we notice details—the pattern play of sunlight through the leaves of a tree or the vibrantly colored spices in a newly

discovered street market—that we might ordinarily overlook.

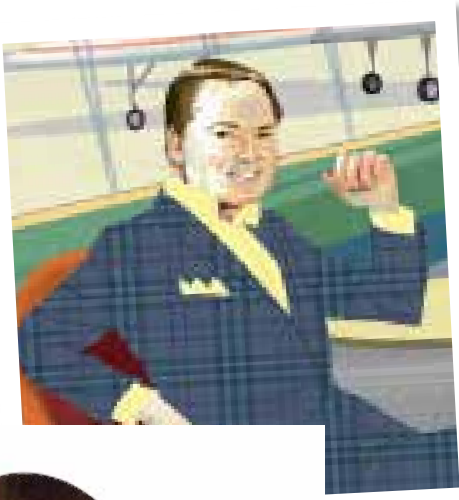
For designers, those nuances may provoke something larger. A Navajo blanket could inspire a new interior color palette. The details of an Irish linen scarf might evoke a custom fabric design. The pattern on a Moroccan rug may be the impetus for a new tile collection. For creative eyes, it's all in the details.

We've asked three designers, known for their penchant for travel, where they go to replenish their muses. Our adventurers? Barry Dixon, Anne-Marie Midy, and Matthew Patrick Smyth. And while their favorite design destinations may surprise you (Who knew Bisbee, Arizona, was a design hot spot?), their passion for these places will certainly persuade you to plan a journey all your own. ➤

curated STYLE SETTERS

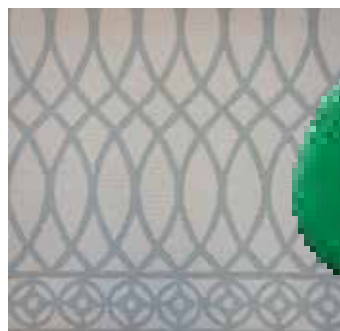
Matthew Patrick Smyth DUBLIN, IRELAND

“Dublin inspires me personally because I am also an Irish citizen. Not only does Dublin cherish its rich Georgian and Neoclassical architecture, it also encourages a modern sensibility. It’s no wonder young people and start-up companies are being drawn to Dublin. There is a fresh and motivated spirit to the city, and you can’t help but feel it.” ➤



“A QUICK 48-HOUR TRIP TO DUBLIN IS SOMETIMES ALL I NEED TO RECHARGE MY DESIGNER BATTERIES.”

Sitting room “This room was for a client who shares my fondness for Dublin and late-18th- and early-19th-century design,” says Smyth. **Chairs** Kerry Joyce’s “Williams” and “Luce” chairs remind Smyth of “favorite Irish Regency pieces—handsome, with a distinctive silhouette.” **Wallpaper** The designer says Tyler-Hall’s “Quill” pattern (above) “has the flair you find in 18th- and 19th-century Irish plasterwork, fabrics, and cut glass.” **Carpet** Smyth’s “Ardmore” carpet for Patterson Flynn Martin was inspired by Dublin ironwork.



Benjamin Moore
“Irish Moss”



PHOTOGRAPH: INTERIOR, JOHN GRUEN