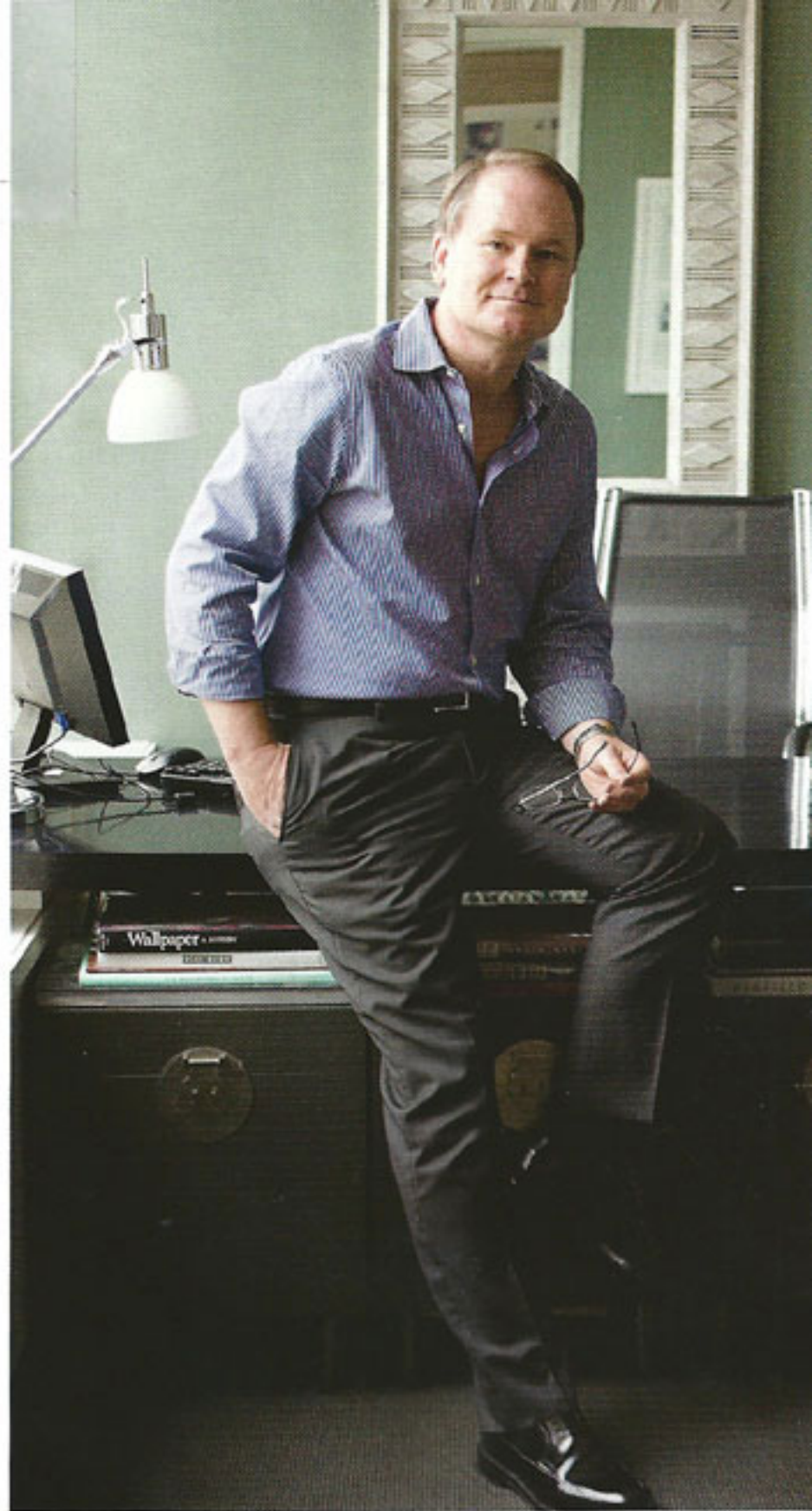


If you didn't catch interior designer Matthew Patrick Smyth, author of *Living Traditions: Interiors* (Mona-celli Press) when he spoke at Bedford Brown's Interior Designer Speaker Series last month, then it's time to sit down with his book, which is written as a charming tête-à-tête with its erudite author. Featuring homes from London to Aspen, it's savvy, and informative, including a set of design rules that ward off the domino effect caused by too many star furnishings fighting for the spotlight until all balance is lost amidst the ensuing chaos.

"The book is a roller coaster ride," says Smyth, "from very traditional to walking the edge. I thought about using existing photos, but noticed how much photography had changed in the past few years — from film to digital, styling and even the type of flowers that were in vogue — and decided to start afresh." Revisiting the houses he'd designed, his own apartment included, was often a study in eliminating clutter that had blurred the lines of his original design.

**BOTTOM LEFT** Fabrics include Gabrielle Mocha, whose inspiration hails from a vintage couture gown Smyth discovered while researching in Paris. The moiré silk Servandoni fabric, which depicts a leafy vine, is named after an 18th century French stage designer. Opia Leaf (Mineral) replicates a 19th century French printed cotton. Finally, the inspiration for the fabric on the far right hails from a document in Lyon and is called "Martine Weave," available through Schumacher. **BOTTOM CENTER** The Cashel carpet (far right), available through Patterson, Flynn & Martin, was inspired by Irish ironwork. **BOTTOM RIGHT** Interior by Matthew Patrick Smyth.



*Thomasville* now available at Parker Furniture



**PARKER**  
FURNITURE

10375 SW Beaverton Hillsdale Hwy,  
Beaverton, Oregon 97005  
503.644.0155  
[parker-furniture.com](http://parker-furniture.com)

## BOOKSHELF | SMYTH (continued)

Smyth is being honored this month at the 5th Stars of Design Award for Interior Design to be held at the D&D Building in New York City. Looking back at his career, he marvels at his own nascent beginnings as a young Irish American clueless about architecture and design, his appetite whetted suddenly at a small upstate New York dinner party, where a rug weaver spins tales about the exquisitely decorated 18th century manor home he's working on in Lake Forest, Illinois, with *Architectural Digest* interior designer David Easton.

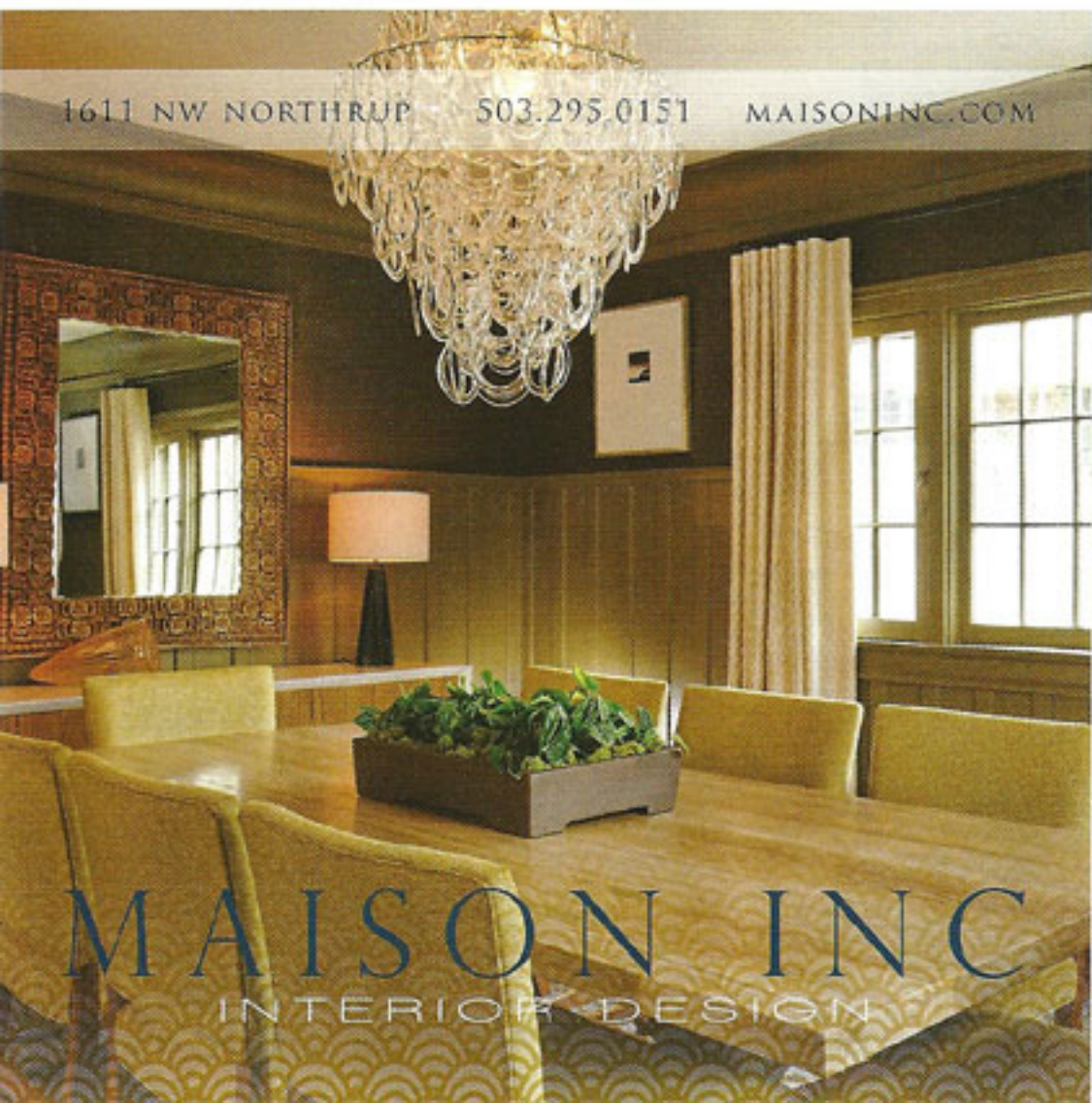
Smyth is still pinching himself as he retraces his steps from Middletown, New York to Manhattan, where Easton became his mentor and Smyth went on to open his own successful firm – Matthew Patrick Smyth Interior Design in 1987.

You might see the dapperly dressed Smyth strolling along the cobblestone streets of Paris, where he keeps a pied-à-terre for inspiration. "I know keeping a Paris apartment makes absolutely no sense economically, but I go there to clear my head before a job, and be stimulated by the energy."

Smyth's popular fabric and wallpaper lines created for F. Schumacher are based on fabrics, styles and couture he researched at the Musée des Arts Décoratifs and other sources in Paris. Sketches of ironwork seen while traveling in Ireland became the inspiration for his 2006 line of rugs for Patterson, Flynn and Martin.

*Autographed copies of Living Traditions Interiors*, by Matthew Patrick Smyth, available through Bedford Brown 503.227.7755

240 pages, 9 x 11 1/2 inches, 200 photos, \$50 hardcover, published by Monacelli Press



1611 NW NORTHROP 503.295.0151 MAISONINC.COM

**MAISON INC**  
INTERIOR DESIGN

