

# INTERIOR DESIGN<sup>®</sup>

JULY  
2006



out and about

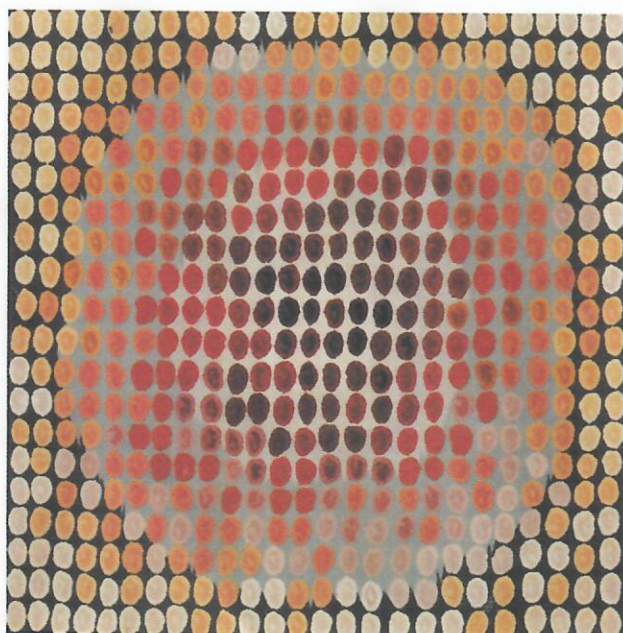
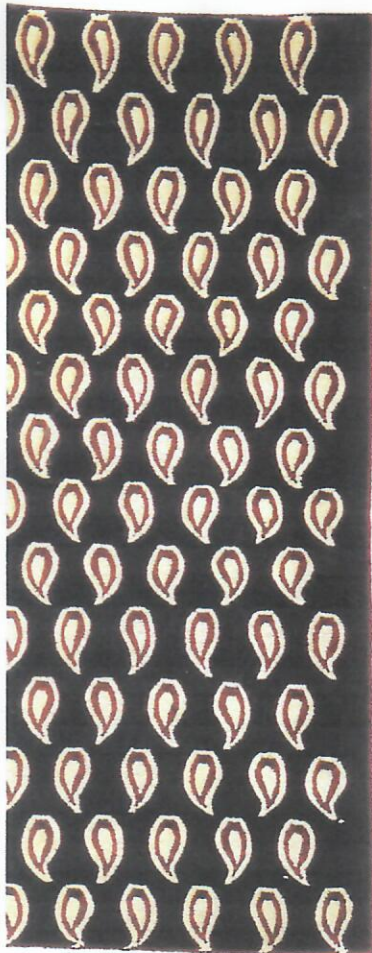
### Kasthall

Gunilla Lagerhem Ullberg takes a trip to **Kongo**. Whispering of Africa, these hand-tufted rugs owe their shimmer to a combination of wool and flax in varying pile heights. Dimensions are about 5 1/2 by 8 feet. 969 Third Avenue, New York, NY 10022; 212-421-0220; [kasthall.com](http://kasthall.com). **circle 369**



### Porro

**SoHo**, an abstract map of New York's downtown district, belongs to a fittingly fashionable collection by *Interior Design Hall of Fame* member Piero Lissoni. To produce the rugs, Sardinian craftsmen hand-loom virgin wool from local sheep. 35 Via per Cantù, 22060 Montesolaro, Italy; 39-031-780237; [porro.com](http://porro.com). **circle 370**



### Patterson, Flynn & Martin

A driving vacation in Ireland inspired designer Matthew Patrick Smyth—and **Cashel** is the result. The wool rug's Aubusson weave combines with a hand-knotted cut pile to recall the intricate metalwork of the Emerald Isle's patterned gates to secret gardens. Comes in three colorways. 12 West 57th Street, Suite 704, New York, NY 10019; 212-333-5353; [matthewsmyth.com](http://matthewsmyth.com). **circle 371**

### Marc Phillips Decorative Rugs

**Moderne** oozes up-to-the-minute chic—despite the line's pedigree in Afghanistan, where carpets are an ancient art. Whether they boast symmetrical wavy lines or organic circles, the more than 50 designs available are all woven from Ghazni wool. 979 Third Avenue, Suite 211, New York, NY 10022; 212-752-4275; [marcphillipsrugs.com](http://marcphillipsrugs.com). **circle 372**



### Studio11

Baby paisleys in khaki shower over the black ground of **Cashmere**. Handcrafted in Nepal from pure wool, at 60 knots per square inch, the rug can be ordered in almost any dimension or color imaginable. Denis Colomb Lifestyle, 1711 Sargent Place, Los Angeles, CA 90026; 213-250-1711; [deniscolomb.com](http://deniscolomb.com). **circle 373**