

INTERIOR DESIGN

\$5.95

SEPTEMBER 1995

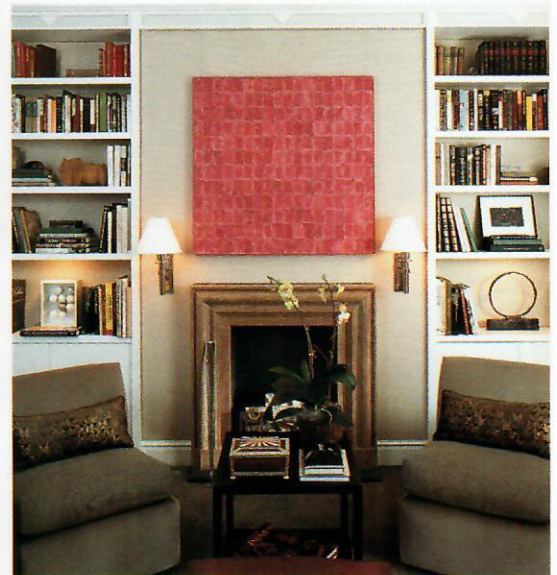
inside
new york

The very best interiors
eastside, westside,
all around town

Plus a special look at the
Kips Bay Show House

MATTHEW P. SMYTH

Matthew Smyth has designed a suite of rooms that he could happily inhabit. Perched at the top of the house, this personal aerie consists of a bedroom with a small balcony and sitting room graced by the little luxuries that make life comfortable and home a retreat. Smyth, inspired by the house's architecture, has played with a series of geometric shapes: bookcase details, houndstooth patterns, upholstered walls, his own designs for fireplace accessories. An elegant, stringently chosen mixture of contemporary furniture and art with some good antique accents fills the space with the necessities of sophistication and enough pleasures to grace the senses.



Photographs: Ralph Gibson. **Antique globe,** Spanish Empire table, Biedermeier cabinet: Florian Papp. **Billy Baldwin chairs,** Smyth-designed fireplace tools, Smyth-designed marble and chrome table: Ventry at Hinson. **Fabrics:** Hinson. **Wall upholstery, curtains, bed upholstery, upholstered chair in bedroom:** Interiors by Royale. **Wall sconces:** Susan Dempsey Lighting. **Fireplace faux finish:** Peter Grzybowski. **Pillows:** Sari Linnehan. **Bedding:** Pratesi. **Chandelier:** Jean Karajian Gallery. **Japanese screen:** Lize Hyde. **Mirror, bench:** Malmaison Antiques. **Painting contractor:** Kevin Campbell, Inc. **Construction:** Sanyour Associates.

Photography: Peter Margonelli (top); Steven Mays (above and left)