

NOTEPAD

- page six

Auctions, art and design events around town.

JESSICA CHISM

IN STORE

- page ten

What's new on the retail front this spring?

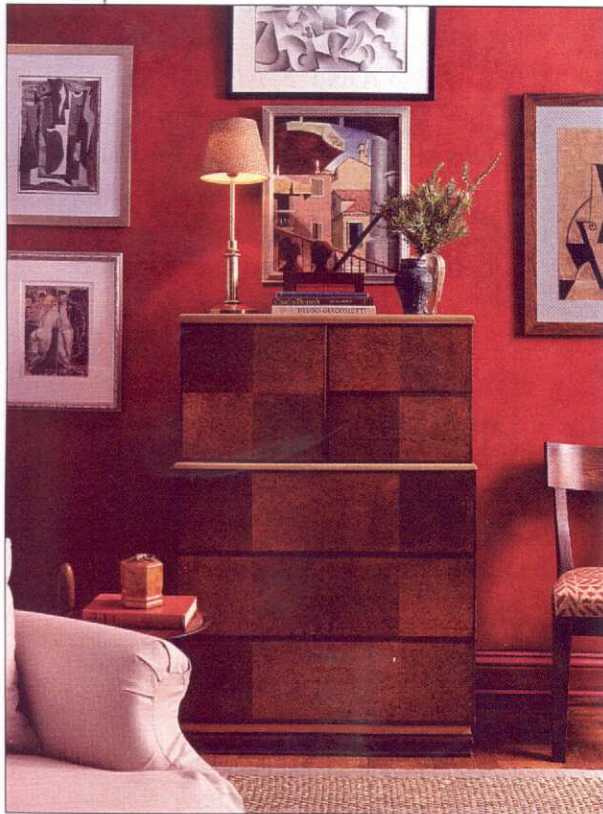
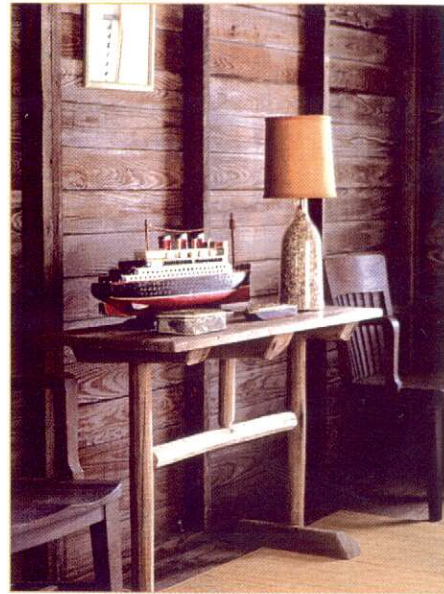
ELON GREEN

NEW YORK STYLE

- page fifteen

Embracing the design elements of the moment.

DANIELLA FARBER



ON THE COVER: Interior designer Matthew Patrick Smyth's own New York apartment brings together a very special collection of 40's art and furnishings. More pictures of his apartment can be seen on pages 15 and 16. Photography: Peter Margonelli

METROPOLITAN

The exquisite workmanship is in evidence in the intricate detail of each and every fixture. Every effort has been made to preserve the authenticity and integrity of the masterpieces.

ILLUMINATING FINE INTERIORS
SINCE 1939



METROPOLITAN LIGHTING FIXTURE CO.

200 Lexington Ave. • #512 New York, NY 10016 • 212.545.0031 • 800.233.4500 • Fax 212.545.0031

NEW YORK STYLE

The wonder of New York is how often it reinvents itself. The half-life of trends can be a New York minute but for now and the foreseeable future, there's a clear direction. In a word, it's MORE. More color, more luxury, more simplicity. Here's how to play New York now.



Designer: Matthew Patrick Smyth
Photography: Peter Margonelli

GUTSY RED

For years, the *cognoscenti* have been saying that red is the new beige. It's finally happened. How to use it? On the advice of these very fine designers, Matthew Patrick Smyth (below) and the design team of Sheryl Asklund Rock and Jorge Letelier (right), think deep and dark when you're picking a wall color, so it can become a foil for shapes, color and art work. It's almost a decorating maxim that red makes everything around it seem important.



Photography: (Left) Peter Margonelli, (Right) Mick Hales